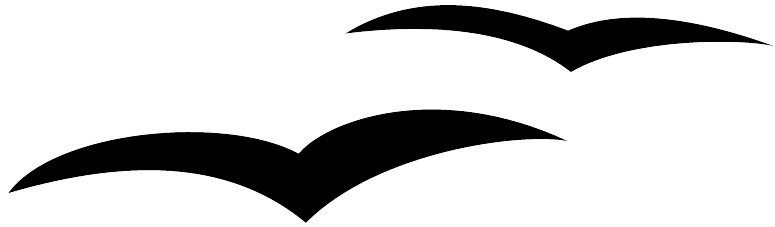


# *How to Create and Maintain a Table of Contents*



How to Create and Maintain a Table of Contents  
First edition: January 2004  
First English edition: January 2004



# Contents

---

<b>Overview</b> .....	ii
About this guide.....	ii
Conventions used in this guide.....	ii
Copyright and trademark information.....	ii
Feedback.....	ii
Acknowledgments.....	iii
Modifications and updates.....	iii
<b>Creating a table of contents</b> .....	1
Opening Writer's table of contents feature.....	1
Using the Index/Table tab .....	2
Using the Entries tab .....	3
Using the Styles tab.....	5
Using the Background tab.....	6
Saving the table of contents.....	8
<b>Maintaining a table of contents</b> .....	9
Editing a table of contents.....	9
Updating a table of contents.....	9
Deleting a table of contents.....	9

# Overview

---

## About this guide

*How to Create and Maintain a Table of Contents* shows you step-by-step how to create and maintain a table of contents for a text document using OpenOffice.org Writer 1.1.0. To understand the instructions, you need to have a basic familiarity with Writer and styles. (For an introduction to Writer, including its styles feature, see the OpenOffice.org document *How to Write and Manage OpenOffice.org text documents using Common Features and Styles*, available at [http://documentation.openoffice.org/HOW\\_TO](http://documentation.openoffice.org/HOW_TO) ).

## Conventions used in this guide

This guide uses the following conventions:

- **Bold** indicates menu options, buttons, and other items that you select on the screen.
- Step-by-step directions are numbered to make them easy for you to follow. When you have a choice, the choices are presented in a bulleted list, just like the bulleted list you're reading now.

## Copyright and trademark information

The contents of this Documentation are subject to the Public Documentation License, Version 1.0 (the "License"); you may only use this Documentation if you comply with the terms of this License. A copy of the License is available at:  
<http://www.openoffice.org/licenses/PDL.rtf>

The Original Documentation is *How to Create and Maintain a Table of Contents*. The Initial Writer(s) of the Original Documentation is Catherine Waterman © 2004. All Rights Reserved. (Initial Writer contact(s): [sparkovich@att.net](mailto:sparkovich@att.net))

Contributor(s): \_\_\_\_\_.

Portions created by \_\_\_\_\_ are Copyright (C) \_\_\_\_\_ [insert year(s)]. All Rights Reserved. (Contributor contact(s): \_\_\_\_\_ [insert hyperlink/alias]).

All trademarks within this guide belong to legitimate owners.

## Feedback

Please direct any comments or suggestions about this document to  
[dev@documentation.openoffice.org](mailto:dev@documentation.openoffice.org)

## Acknowledgments

Thanks to Sophie Gautier, author of the French native-language document, *Comment insérer une Table des Matières*, which I used as a reference.

## Modifications and updates

<i>Version</i>	<i>Date</i>	<i>Description of Change</i>
0.1	01/19/04	Initial version issued for comment



## Creating a table of contents

Writer's table of contents feature lets you build an automated table of contents from the headings in your document. Before you start, make sure that the headings in your document are styled consistently. For example, you can use the Heading 1 style for chapter titles and the Heading 2 and Heading 3 styles for chapter subheadings.

This chapter shows you how to:

- Open Writer's table of contents feature.
- Use Writer's table of contents feature to customize your document's table of contents.
- Save the table of contents.

### Opening Writer's table of contents feature

To open Writer's table of contents feature and insert a new table of contents in your document, follow these steps:

- 1) Place your cursor at the point in your document when you want to insert the table of contents.
- 2) From the main menu, choose **Insert > Indexes and Tables > Indexes and Tables...**  
The Insert Index/Table window appears.
- 3) Click the **Index/Table** tab if it isn't already displayed.

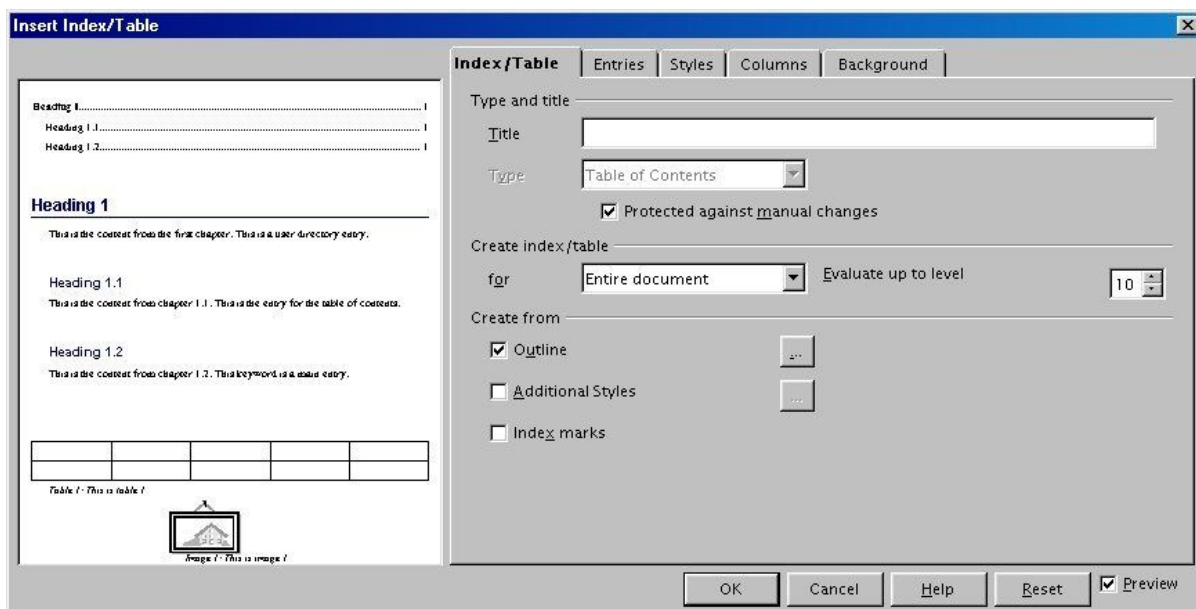


Illustration 1 Index/Table tab

The Insert/Index Table window has five tabs. Four of them are used when creating a table of contents:

- Use the **Index/Table** tab to set the table's attributes.
- Use the **Entries** and **Styles** tabs to format the table entries.
- Use the **Background** tab to add color or a graphic to the table background.

The next four sections of this chapter tell you how to use each of these four tabs.

The preview box, located on the left-hand side of each tab, shows you as you work how the table of contents will look. (If you don't see the preview box, check the **Preview** check box in the lower right-hand corner of the window.)

## Using the Index/Table tab

Use the Index/Table tab, pictured on page 1, to set the table's attributes.

### Setting basic attributes

To set the table's basic attributes:

- 1) From the **Type** drop-down list in the Type and title area of the tab, select **Table of Contents** if it isn't already selected.
- 2) From the drop-down list in the Create index/table area, select **Entire document**.
- 3) In the Create from area, check the **Outline** check box.
- 4) In the Create from area, clear the **Index marks** check box.

### Adding a title

If you'd like the table of contents to have a title, enter it in the **Title** field. (If Writer entered a title in this field automatically, you can modify it by simply typing over the value.) To delete the title, clear the **Title** field.

### Protecting against manual changes

To protect the table of contents from being changed or deleted accidentally, check the **Protected against manual changes** check box. If this box is checked, the table of contents can only be updated from the Insert Table/Index window. If the box isn't checked, the table of contents can be changed directly on the document page, just like other text.

### Adjusting the number of levels

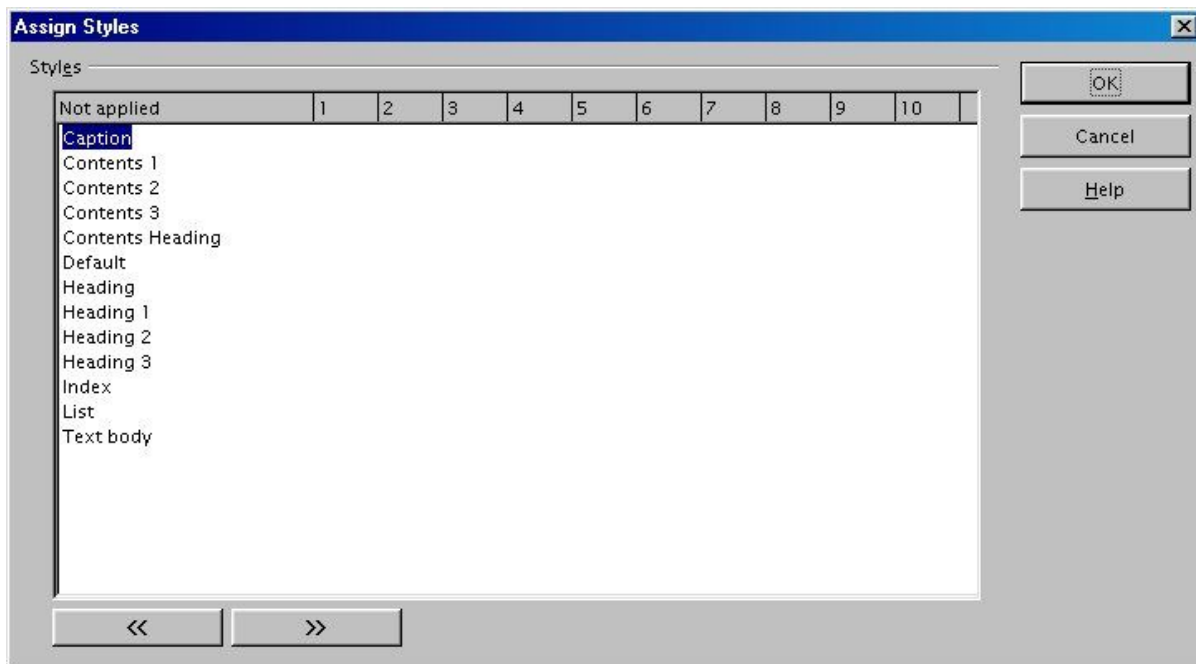
By default, Writer evaluates 10 levels of headings when it builds the table of contents. To change the number of levels evaluated, enter the desired number in the **Evaluate up to level** spin box.



## Assigning custom styles

Writer automatically assigns to the table of contents all paragraphs formatted with the default heading styles (Heading 1, Heading 2, and so on). To assign paragraphs formatted with custom styles, follow these steps:

- 1) In the Create from area, check the **Additional Styles** check box.
- 2) Click the (...) button to the right of the check box. The Assign Styles window appears.



*Illustration 2 Assign Styles window*

- 3) In the **Not applied** column, click the style that you want to assign to the table of contents.
- 4) Use the >> button to move the selected style to the desired outline level. For example, if you want paragraphs formatted with the selected style to appear as top-level entries in the table of contents, click the >> button once to move the style into the **1** column. To move the style in the opposite direction, use the << button.
- 5) Click **OK** to save your changes and return to the Index/Table tab. Or, click **Cancel** to return without saving your changes.

## Using the Entries tab

Use the Entries tab, pictured on page 4, to format the entries in the table of contents. For each outline level, you can add and delete elements, such as chapter numbers, and you can also apply character styles to individual elements.

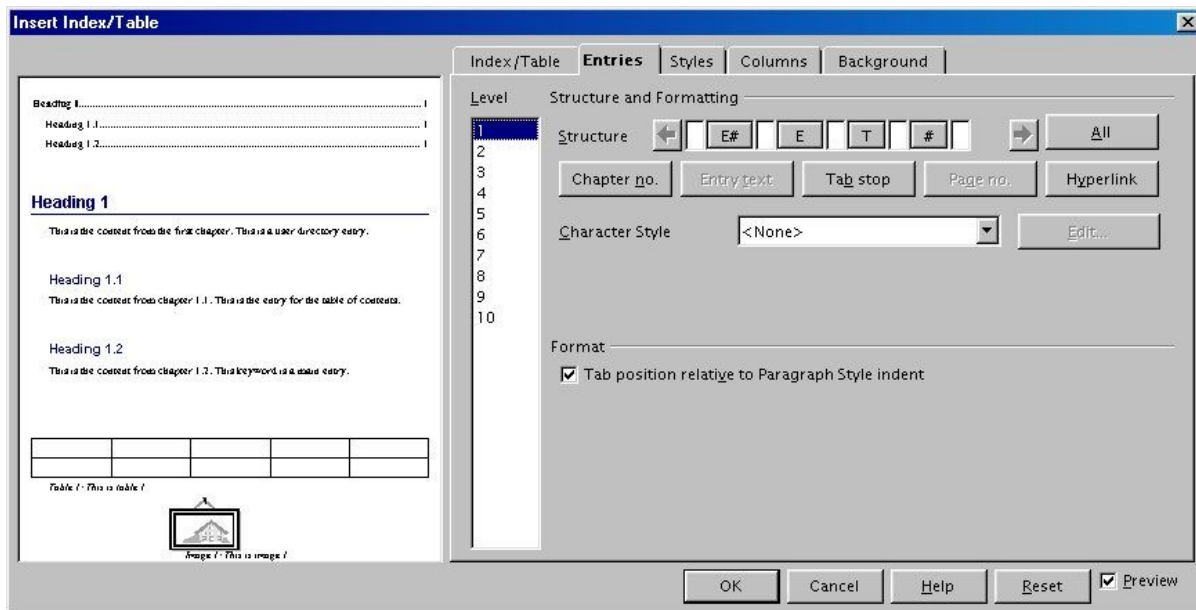


Illustration 3 Entries tab

To begin, click a level number in the **Level** column to select the outline level whose elements you want to format. (You'll be able to apply your changes to all outline levels later.) The Structure line displays the elements for entries in that level. Each button on the Structure line represents one element:

- The **E#** button represents the chapter number.
- The **E** button represents the entry text.
- The **T** button represents a tab stop.
- The **#** button represents the page number.
- The **LS** button represents the start of a hyperlink. (This button doesn't appear on the default Structure line.)
- The **LE** button represents the end of a hyperlink. (This button doesn't appear on the default Structure line.)

Each white field on the Structure line represents a blank space.

### Deleting elements

To delete an element from the Structure line, click the button that represents that element and then press the Delete key on your keyboard. For example, to delete a tab stop, click the **T** button and then press the Delete key.

### Adding elements

To add an element to the Structure line, follow these steps:

- 1) Place your cursor in the white field to the left of where you want to insert the element.

- 2) Click one of the five buttons that are just below the Structure line. (For example, to add a tab stop, click the **Tab stop** button.) A button representing the new element appears on the Structure line.

Note that if you insert a hyperlink, you must indicate both the beginning and end of the link. For example, to change the default Structure line so that the chapter number and the entry text form a hyperlink, follow these steps:

- 1) On the Structure line, place your cursor in the white field to the left of the **E#** button. (Recall that the **E#** button represents the chapter number.)
- 2) Click the **Hyperlink** button. An **LS** button, representing the start of the hyperlink, appears on the Structure line.
- 3) On the Structure line, place your cursor in the white field to the right of the **E** button. (Recall that the **E** button represents the entry text.)
- 4) Click the **Hyperlink** button again. An **LE** button, representing the end of the hyperlink, appears on the Structure line.

### Applying character styles

To apply a character style to an element on the Structure line:

- 1) On the Structure line, click the button that represents the element to which you want to apply a style.
- 2) From the **Character Style** drop-down list, select the style to apply. Writer applies the selected style to the selected element.

To view or edit the attributes of a character style, select the style from the **Character Style** drop-down list and then click the **Edit** button.

### Applying changes to all outline levels

To apply the displayed structure and formatting to all outline levels, click the **All** button.

### Using the Styles tab

Use the Styles tab, pictured on page 6, to apply paragraph styles to the table of contents. You can apply a different paragraph style to each outline level of the table.

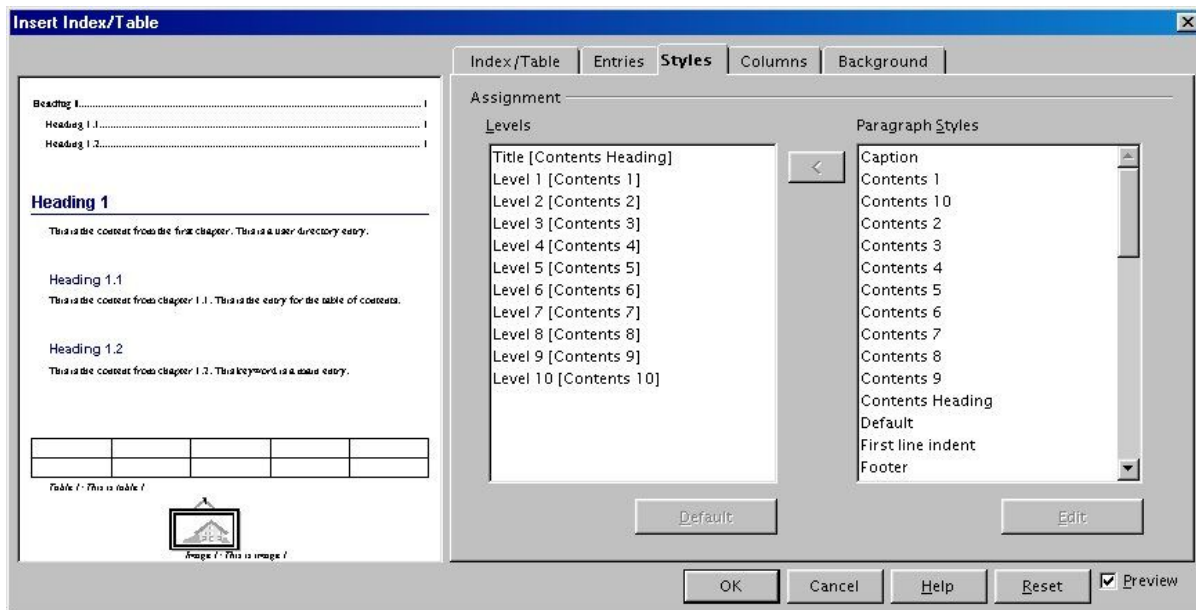


Illustration 4 Styles tab

To apply a paragraph style to an outline level, follow these steps:

- 1) In the **Levels** list box, select the desired outline level by clicking it.
- 2) In the **Paragraph Styles** list box, click the paragraph style to apply.
- 3) Click the < button to apply the selected paragraph style to the selected outline level.

To remove paragraph styling from an outline level:

- 1) In the **Levels** list box, select the desired outline level by clicking it.
- 2) Click the **Default** button.

To view or edit the attributes of a paragraph style, click the style in the **Paragraph Styles** list box and then click the **Edit** button.

## Using the Background tab

Use the Background tab, pictured in the illustrations on page 7, to add color or a graphic to the table background.

### Adding color

To add color to the background of the table of contents, simply click the desired color in the color grid.

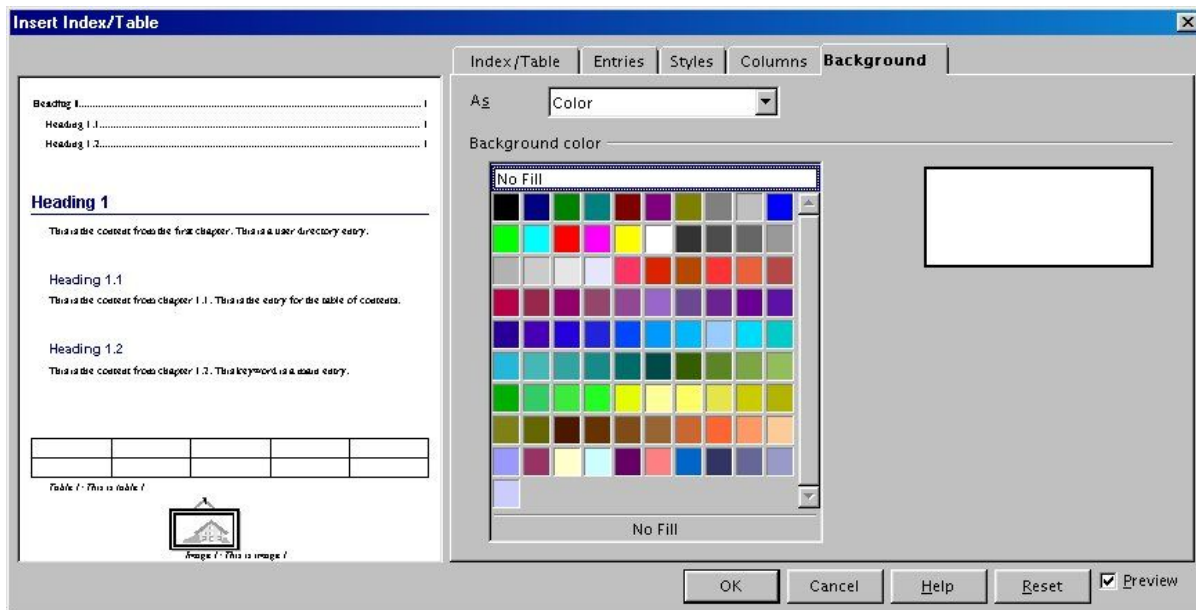


Illustration 5 Background tab

## Adding a graphic

To add a graphic to the background of the table of contents, follow these steps:

- 1) From the **As** drop-down list, select **Graphic**. The Background tab displays the graphics options.

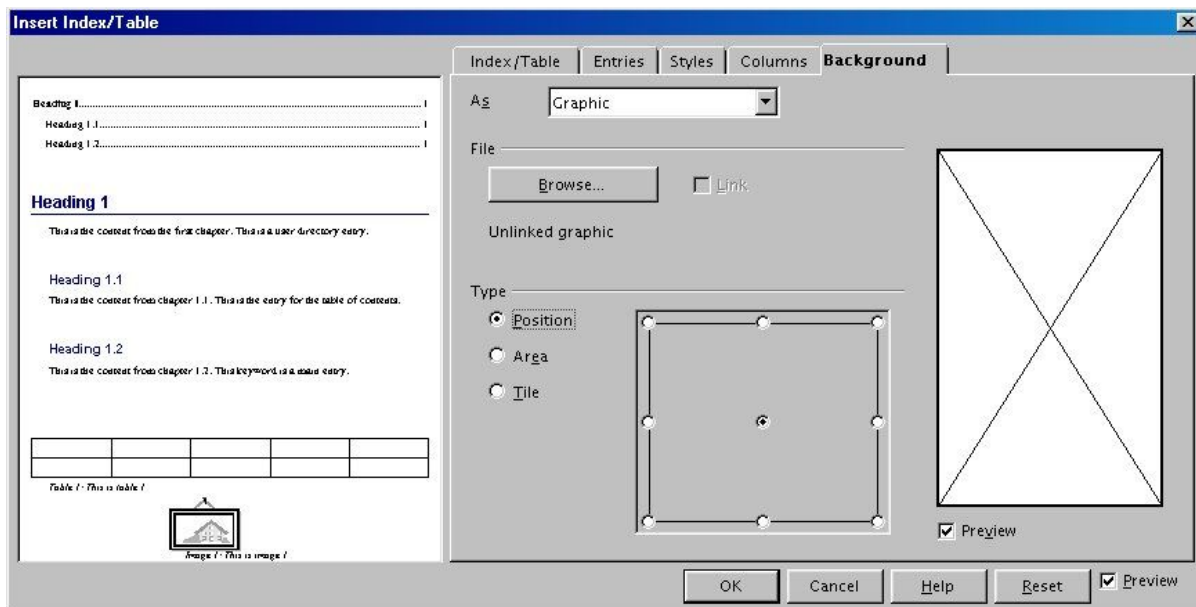


Illustration 6 Graphics options on the Background tab

- 2) Click the **Browse** button. The Find Graphics window opens.
- 3) Find the graphic file that you want to use and click the **Open** button. The Find Graphics window closes and the selected graphic appears in the graphic preview box on the right-hand side of the Background tab. (If you don't see the graphic, check the **Preview** check box underneath the graphic preview box.)
- 4) In the Type area of the Background tab, choose how you want the background graphic to appear:
  - To position the graphic in a specific location in the background, select **Position** and then click the desired location in the position grid.
  - To stretch the graphic so that it fills the entire background area, select **Area**.
  - To repeat the graphic across the entire background area, select **Tile**.

### Removing color or graphics

To remove color or graphics from the table background, follow these steps:

- 1) From the **As** drop-down list, select **Color**.
- 2) Click **No Fill** on the color grid.

### Saving the table of contents

To save the table of contents so that the table appears in your document, click **OK**. The Insert Index/Table window closes and the table of contents appears in your document.

## Maintaining a table of contents

---

This chapter shows you how to:

- Edit an existing table of contents.
- Update a table of contents when changes are made to the document.
- Delete a table of contents.

### Editing a table of contents

To edit an existing table of contents, right click anywhere in the table of contents and choose **Edit Index/Table** from the context menu. The Insert Index/Table window opens and you can edit and save the table using the four tabs described in the previous chapter.

### Updating a table of contents

To update a document's table of contents when changes are made to the document, right click anywhere in the table of contents and choose **Update Index/Table** from the context menu. Writer updates the table of contents to reflect the changes in the document.

### Deleting a table of contents

To delete the table of contents from a document, right click anywhere in the table of contents and choose **Delete Index/Table** from the context menu. Writer deletes the table of contents.

***Note:** Writer won't ask you to confirm the delete! Use caution when deleting a table of contents.*