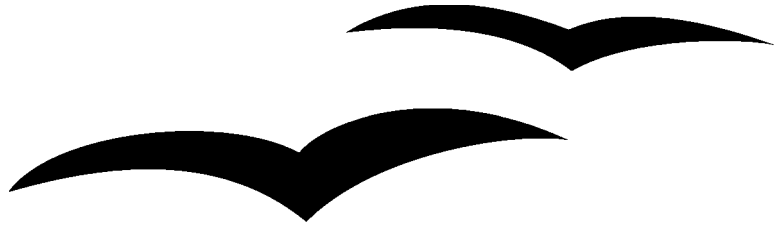


# *Creating Charts and Graphs*



Title:            Creating Charts and Graphs  
Version:         1.0  
First edition:   December 2004  
First English  
edition:         December 2004



# Contents

---

- [Overview](#)..... ii
- [Copyright and trademark information](#)..... ii
- [Feedback](#)..... ii
- [Acknowledgments](#)..... ii
- [Modifications and updates](#)..... ii
- [Inserting charts](#)..... 1
- [Using the Chart AutoPilot](#)..... 2
- [Choosing the chart type](#)..... 5
- [Editing the chart](#)..... 10
- [Moving and resizing a chart](#)..... 11
- [Graphics and color](#)..... 12
- [Applying a background to a spreadsheet](#)..... 12
- [Graphics in the background of cells](#)..... 12

## Overview

---

OpenOffice.org Calc lets you present data graphically in a chart, so that you can visually compare data series and view trends in the data.

### Copyright and trademark information

The contents of this Documentation are subject to the Public Documentation License, Version 1.0 (the "License"); you may only use this Documentation if you comply with the terms of this License. A copy of the License is available at:

<http://www.openoffice.org/licenses/PDL.rtf>.

The Original Documentation is Creating Charts and Graphs. The Initial Writer(s) of the Original Documentation is/are Linda Worthington © 2004. All Rights Reserved. (Initial Writer contact(s): [lindaw65@earthlink.net](mailto:lindaw65@earthlink.net). The Initial Writer contact(s) is to report errors in the documentation. For questions regarding how to use the software, subscribe to the Users Mail List and post your question there: <http://support.openoffice.org/index.html>.)

All trademarks within this guide belong to legitimate owners.

### Feedback

Please direct any comments or suggestions about this document to:

[authors@user-faq.openoffice.org](mailto:authors@user-faq.openoffice.org).

### Acknowledgments

Thanks to Peter Kupfer for his review of this chapter.

### Modifications and updates

<i>Version</i>	<i>Date</i>	<i>Description of Change</i>
1.0	24 December 2004	First published version.

## Inserting charts

OpenOffice.org Calc offers a variety of different ways to chart or graph your Calc data. Any time a chart is created, the chart AutoPilot is invoked.

Open the spreadsheet and highlight (select) the data to be included in the chart. There are two ways to proceed after you have selected your data. The first method (see Figure 1) is **Insert > Chart**:

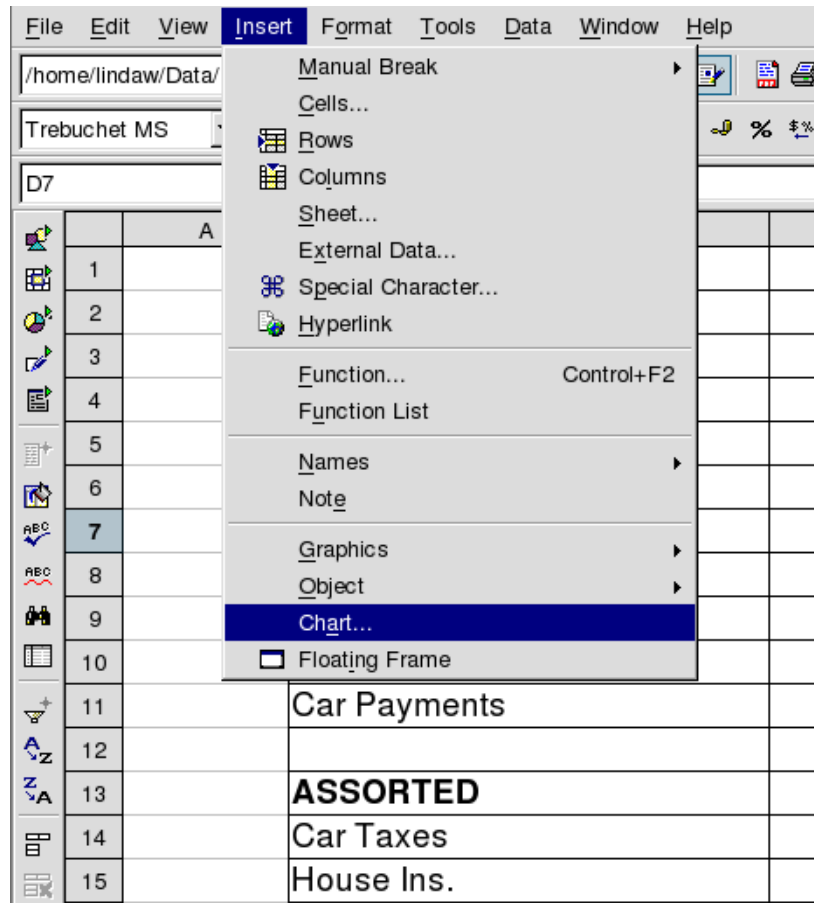


Figure 1. Selecting Insert Chart

The second method (see Figure 2) is to long-click (that is, hold down the left mouse button for 1 second) on **Insert Object** to display the floating toolbar, then click on the **Insert Chart** button:

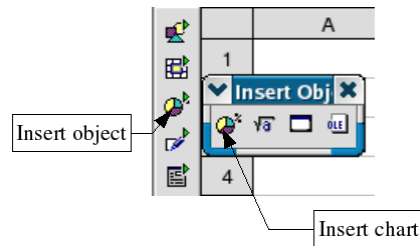


Figure 2. Using the Insert Chart button

## Using the Chart AutoPilot

Once Insert Chart is selected, the chart AutoPilot menu appears. (See Figure 3.) The first dialog is used to define the data range, the labels, and the target sheet for the chart.

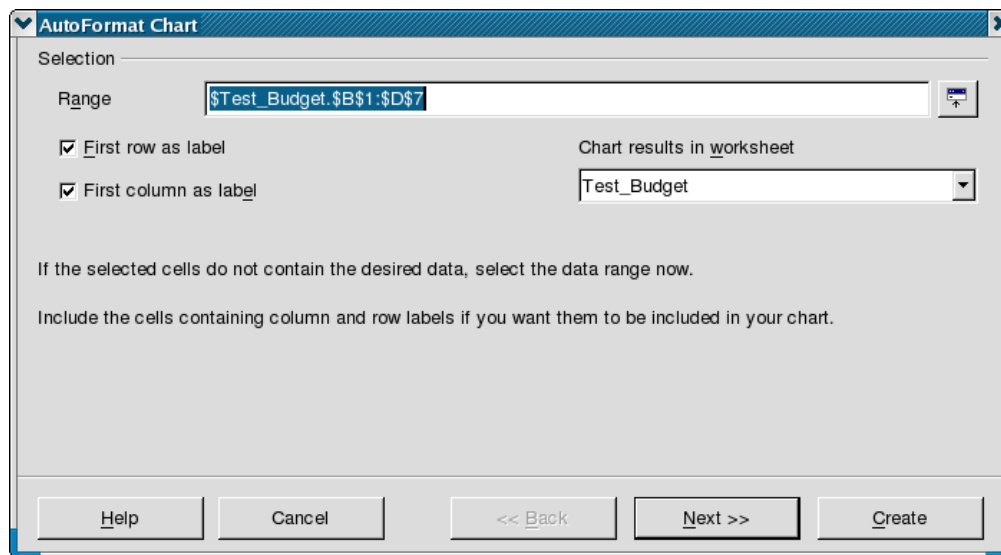


Figure 3. Create a Chart AutoPilot

### Data Range

The data range selected should contain both the labels and the data. (See Figure 4.) If the data range is selected when the AutoPilot is started, it will automatically be inserted in the *Range* input field. If the AutoPilot is started without a selected data range, a range can be selected by clicking on the range selection icon next to the *Range* input field.

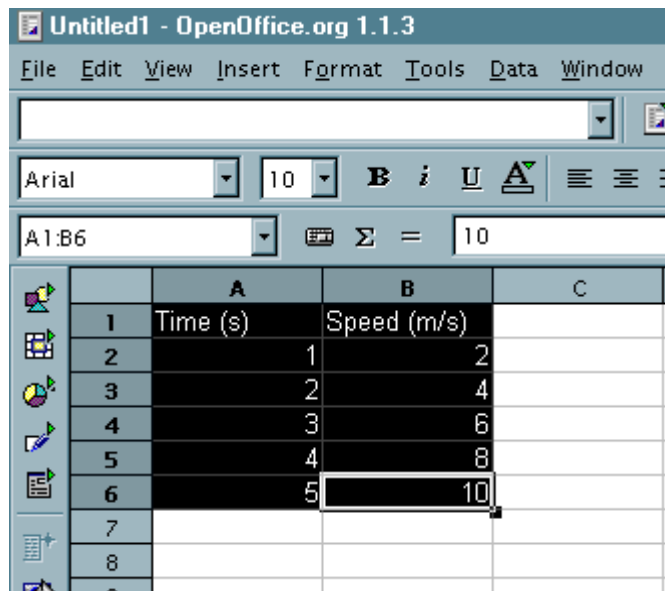


Figure 4. Highlighted Data Range

### First Row/Column as Label

**First Row as Label:** Uses the entries in the top row of the selection as labels for the data range. This setting is useful if there are several columns of data that need to be displayed in the same chart. (See Figure 5.)

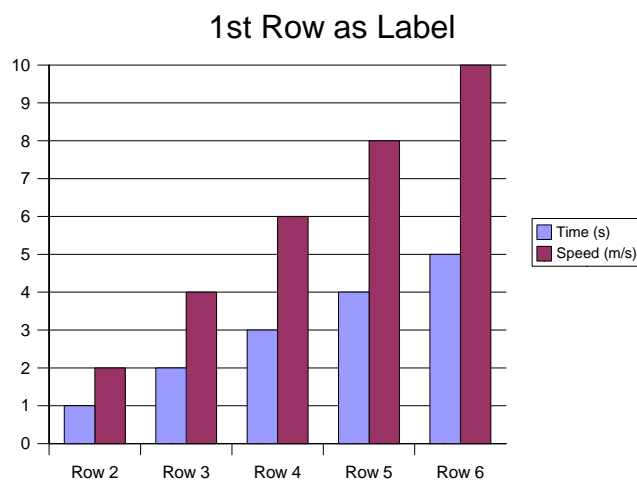


Figure 5. Example using first row as label

**First Column as Label:** Uses the entries in the leftmost column of the selection as labels for the data range. (See Figure 6.)

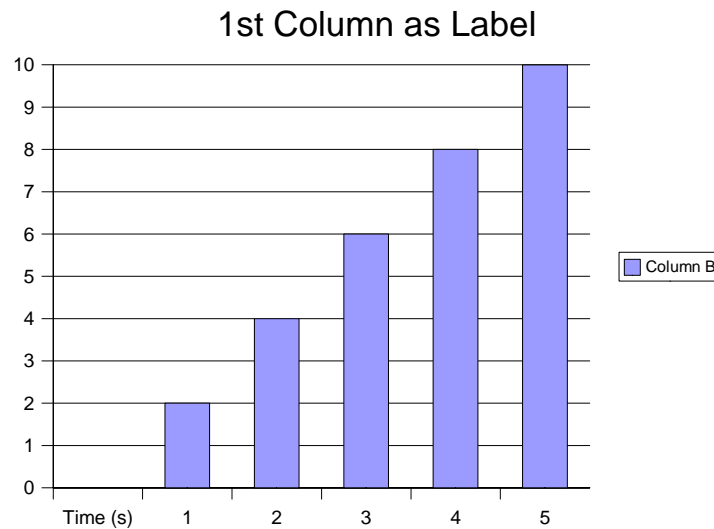


Figure 6. Example using first column as label

**First Column & First Row as Label:** Both checkboxes can be selected as well. This provides a combination of both options. This sets the first row as the labels and the first column as the x-axis values. (See Figure 7.)

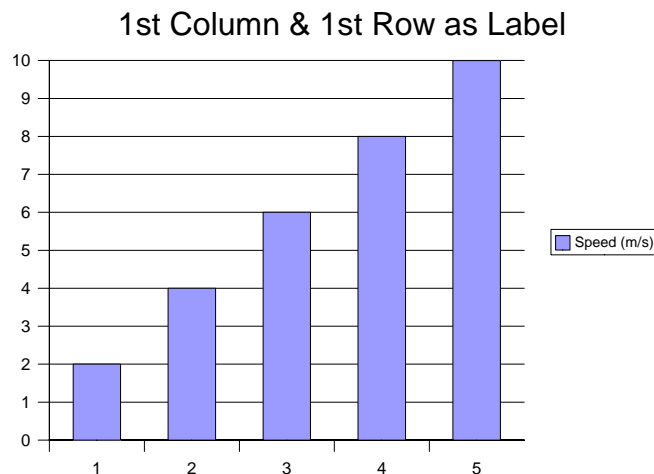


Figure 7. Example using first column and first row as labels

### Chart Results Output

This dropdown box specifies which sheet the chart will output to. By default the current sheet is selected, but any sheet, or a new sheet, can also be selected. However, a chart can not be set to be its own sheet; it must be an object in a normal sheet.

Once the correct options have been input, either click **Create** to create the chart, or click **Next** to proceed to the next dialog to choose the chart type.



## Choosing the chart type

On the next page of the AutoPilot (see Figure 8), the chart type can be chosen and a preview of the chart output can be seen. Click **Create** from here, or click **Next** for more options.

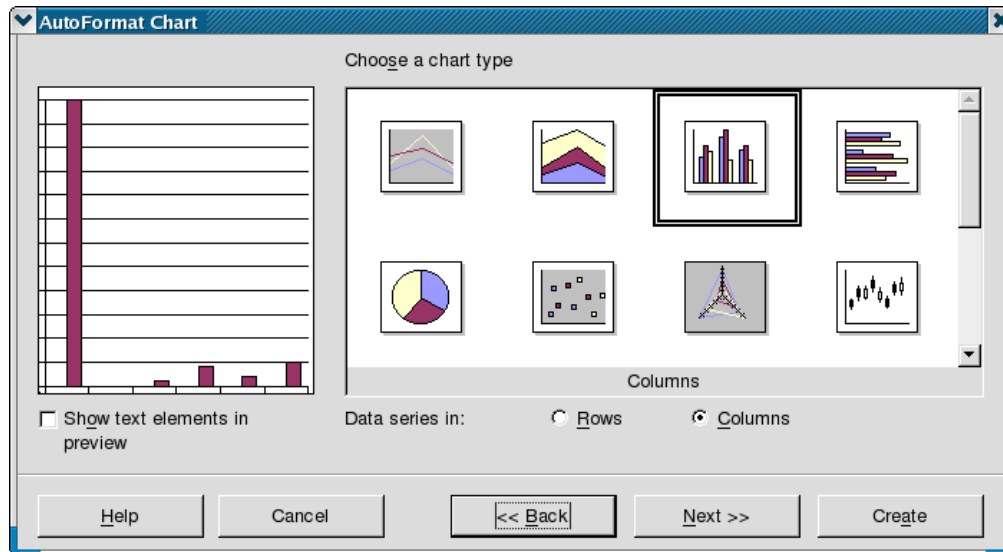


Figure 8. Choosing a chart type (format)

OpenOffice.org Calc offers several different chart types. Most chart types come in both a 2-dimensional and a 3-dimensional style. Below is the list of available styles with examples.

**Lines (2D & 3D)** – Provides a standard line graph that is useful for displaying changing data over a period of time.

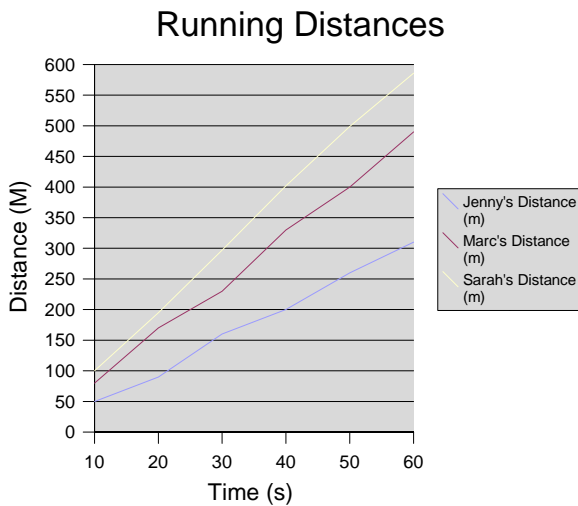


Figure 9. 2D Line Graph: Normal

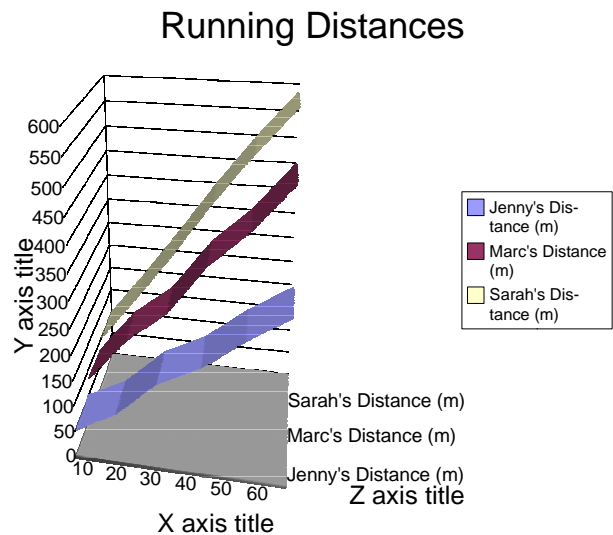


Figure 10. 3D Line Graph: Deep

**Areas (2D & 3D)** – Creates graphs that are similar to line graphs but with the area under the line shaded in.

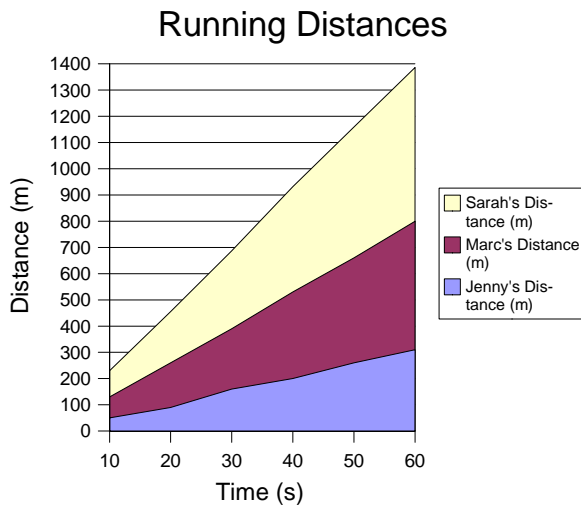


Figure 11. 2D Area: Stacked

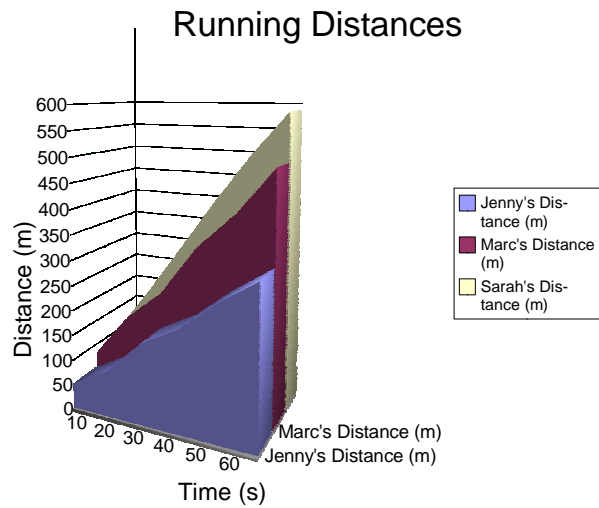


Figure 12. 3D Area: Deep

**Columns (2D & 3D)** – Creates vertical columns to represent data. The columns can be normal, stacked, or by percent. In 3D mode the data can also be represented by cylinders and cones.

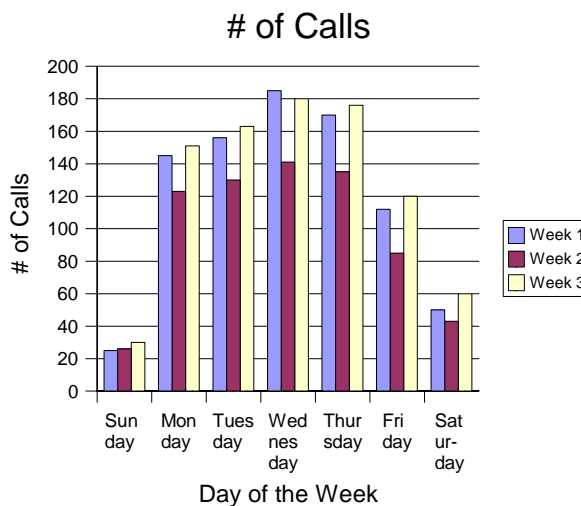


Figure 13. 2D Column: Normal

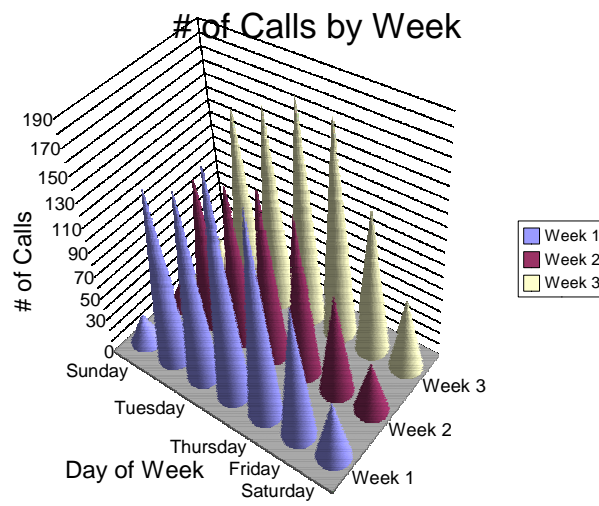


Figure 14. 3D Columns: Cones, deep

**Bars (2D & 3D)** – Provides the same features as columns, but they are horizontal.

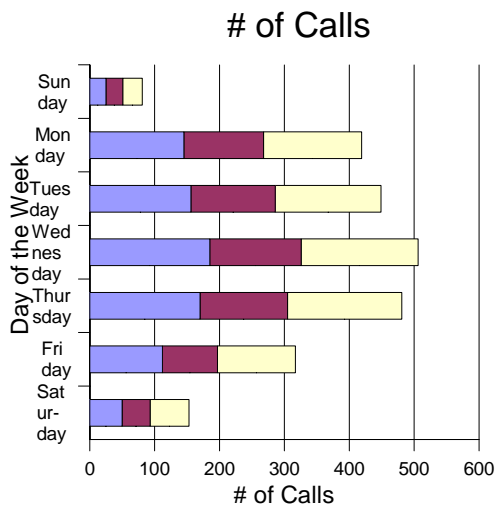


Figure 15. 2D Bar: Stacked

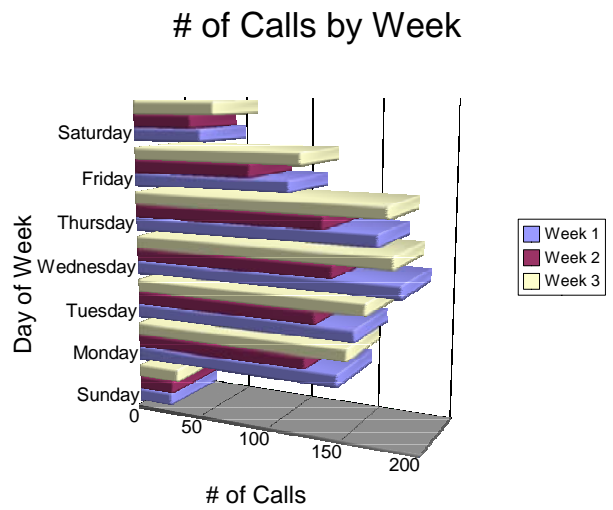


Figure 16. 3D Bars: Normal

**Pies (2D & 3D)** – Graphs that are useful for showing the parts of a whole. The pie chart can be separated or keep as a solid circle.

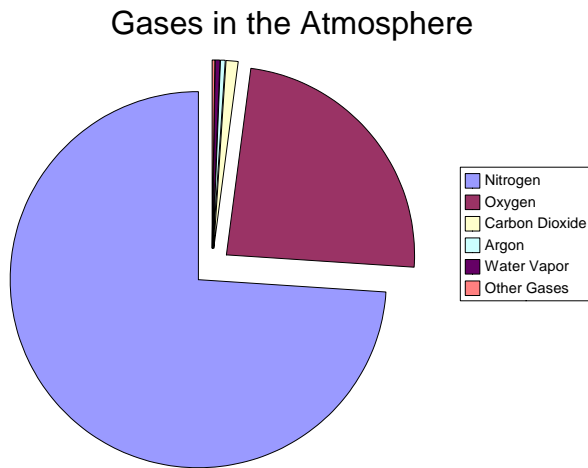


Figure 17. 2D Pie: Offset 2

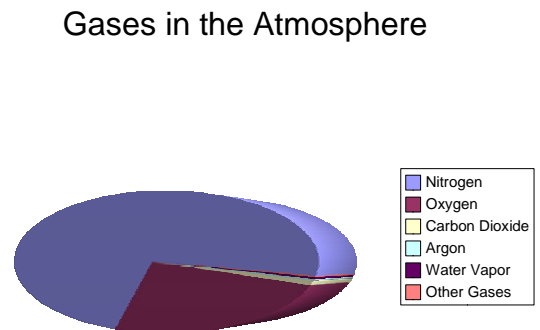


Figure 18. 3D Pie: Normal

**XY Chart** – This graph is similar to a scatter plot. It can be used to show several trials of experiments with two variables.

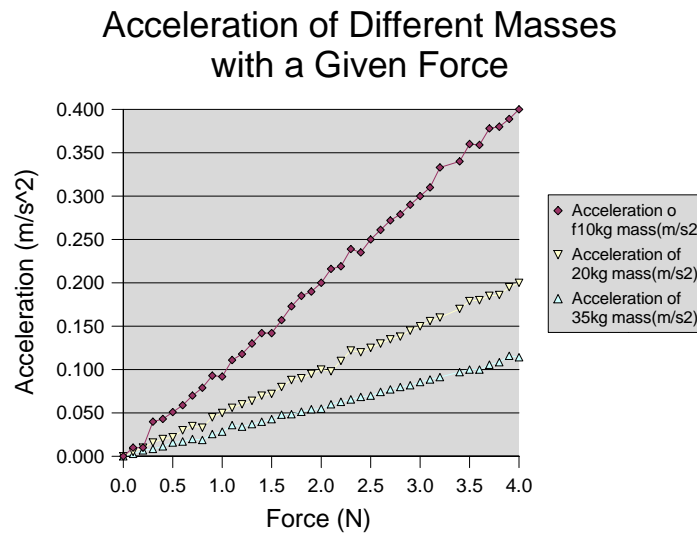


Figure 19. XY Chart: Lines with Symbols

**Net** – Provides a circular graph with a separate Y axis for each item on the X axis. Points within a data series are connected with a polygon.

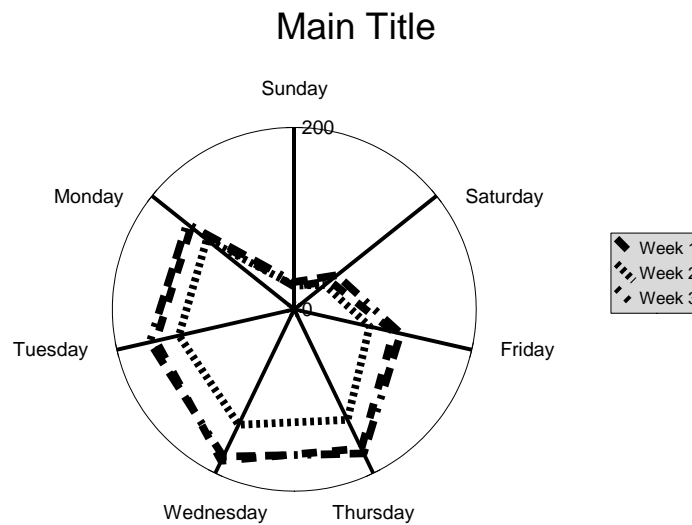


Figure 20. Net Chart: Normal

**Stock Chart** – Shows change from one data series to the next for each X value.

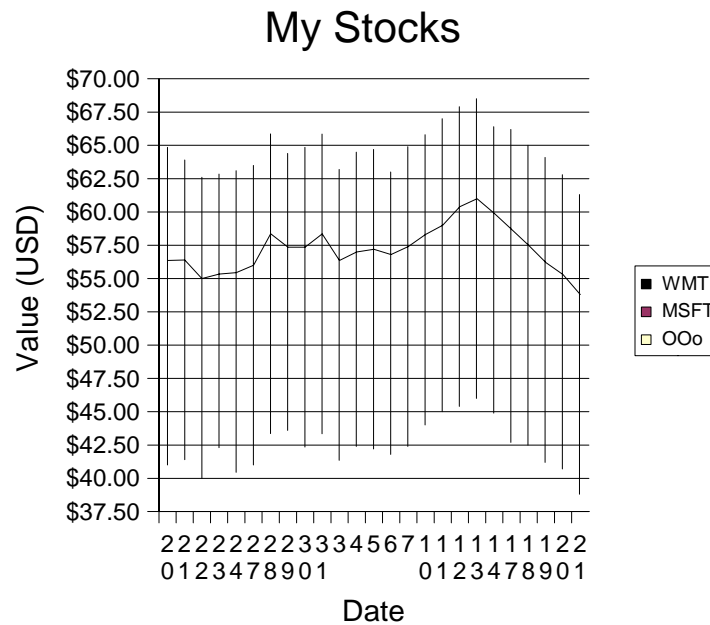


Figure 21. Stock: Stock Chart 2

The next page of the AutoPilot (see Figure 22) provides options for fine-tuning the chart selection. There are several variants that can be chosen for each graph type. In the example charts above, the variants come after the colon. Again, the chart can be created from this screen, or titles and labels can be added by clicking **Next**.

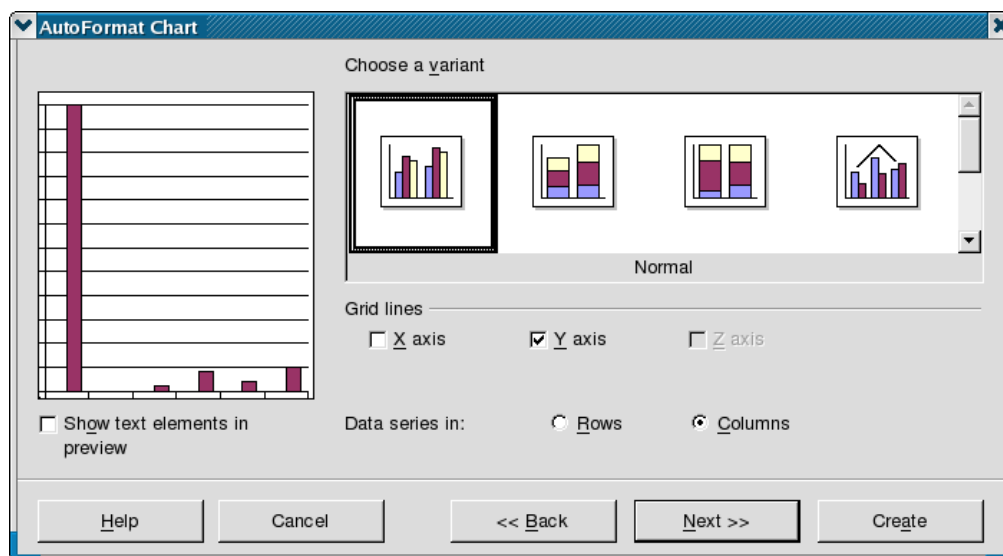


Figure 22. Choosing a variant

On the last page of the AutoPilot (see Figure 23), a title and labels for the axes can be added.

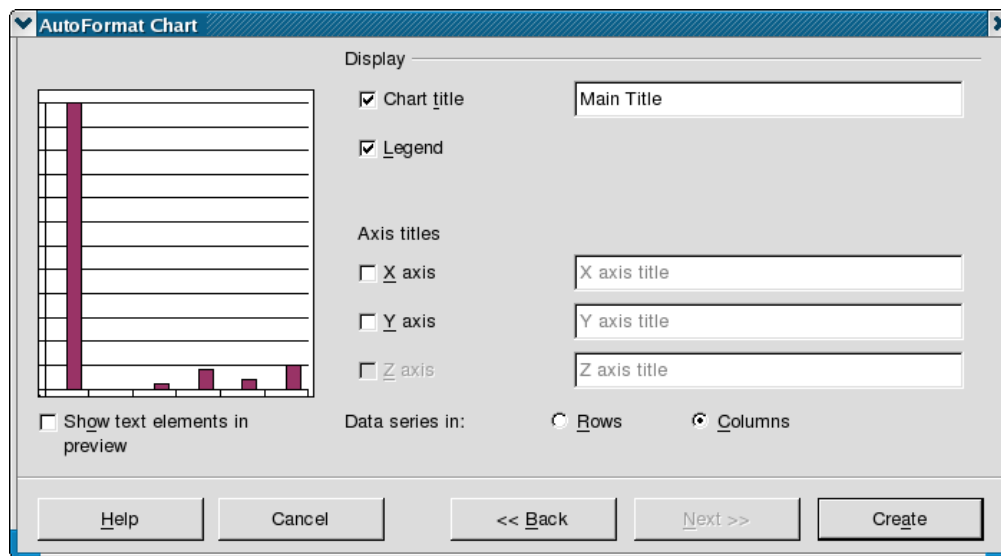


Figure 23. Adding text

## Editing the chart

---

Once the chart is created, further edits can be made. To edit a chart:

- 1) Select the chart (left-click).
- 2) Right-click and select **Edit**.

Alternatively, the chart can be double-clicked.

This will activate a new toolbar on the left side of the screen (see Figure 24) used for editing different aspects of the chart.

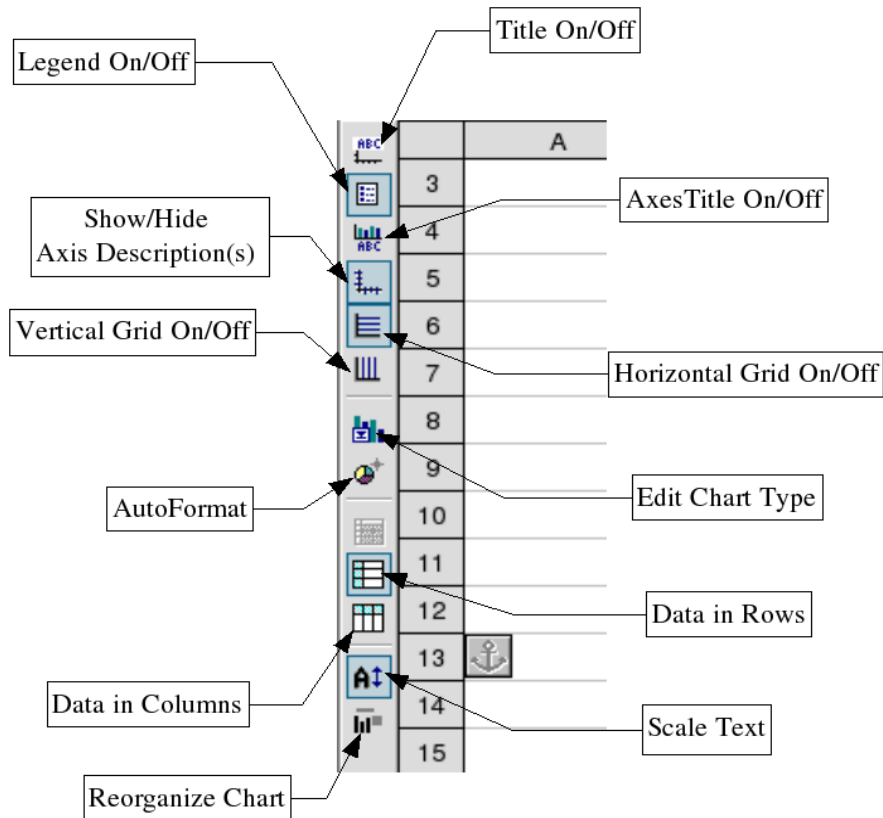


Figure 24. Edit Chart toolbar

## Moving and resizing a chart

Once the chart has been created, it can be moved or scaled. To move the chart:

- 1) Click on the chart to select it.
- 2) Click and hold down the left mouse button to drag the chart across the window.

To resize the chart:

- 1) Click on the chart to select it.
- 2) Click on one of the green handle bars (see Figure 25) and move the mouse.

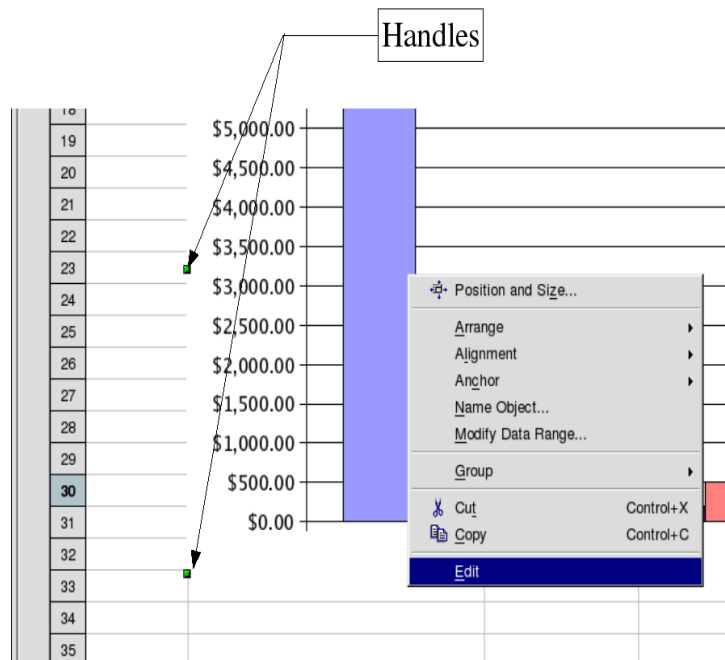


Figure 25. Resizing chart handles

## Graphics and color

### Applying a background to a spreadsheet

- 1) Select the cells.
- 2) Choose **Format > Cells** (or right-click on the chart and choose **Format Cells** from the context menu).
- 3) On the **Background** tab page, select the background color.

### Graphics in the background of cells

- 1) Choose **Insert > Graphics > From File**.
- 2) Select the graphic and click **Open**.
- 3) The graphic is inserted and anchored to the current cell.

To make the inserted graphic part of the background:

- 1) Select it.
- 2) Right click and select **Arrange > To Background**.



**Note:** To remove a graphic from the background, use the Navigator. Press F5, select the graphic from the navigator. Double-click on the appropriate graphic, and then right-click on it and change the arrangement.