

Discovering the New Chart Module

Pierre-André Galmes, StarXpert
Björn Milcke, Sun Microsystems



Agenda



- New Key Features
- Opportunities for Developers
- Open Issues and Plans for the Future
- Questions & Answers

New Key Features



- Wizard
- Flexible Source Ranges
- Own Data Editor

Wizard



- New Look
- Enhanced UI
- Live Preview
- New Chart Types
- Regression Curves for Chart Types other than XY-Charts
- New 3D Dialog

Flexible source ranges



- Improved Excel import
- Separate labels from data
- New Data Series Dialog

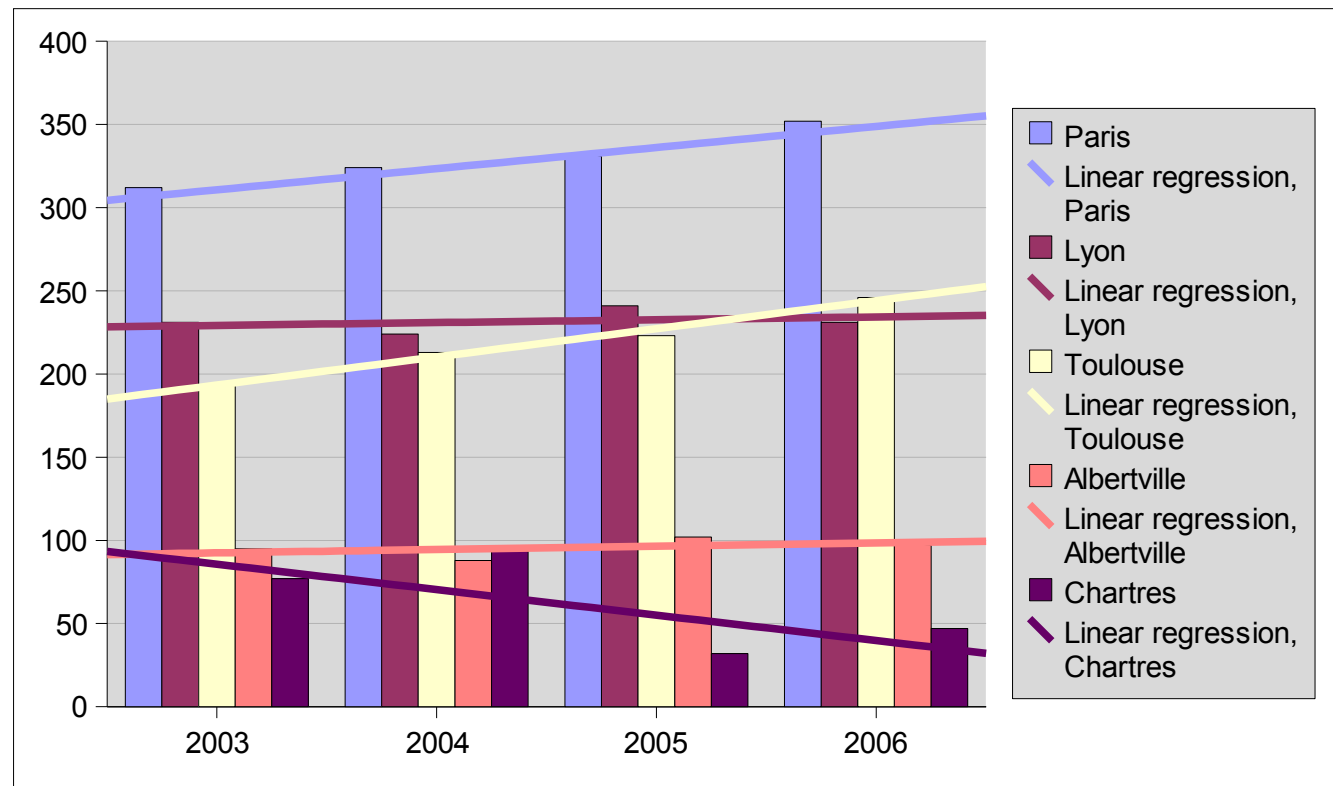
Own Data Editor



- One Series has only One Label
- Series-Oriented
- Chart Type Icon
- Color Bar
- Number Formats
- Live Preview

Regression Curves

Live Demonstration

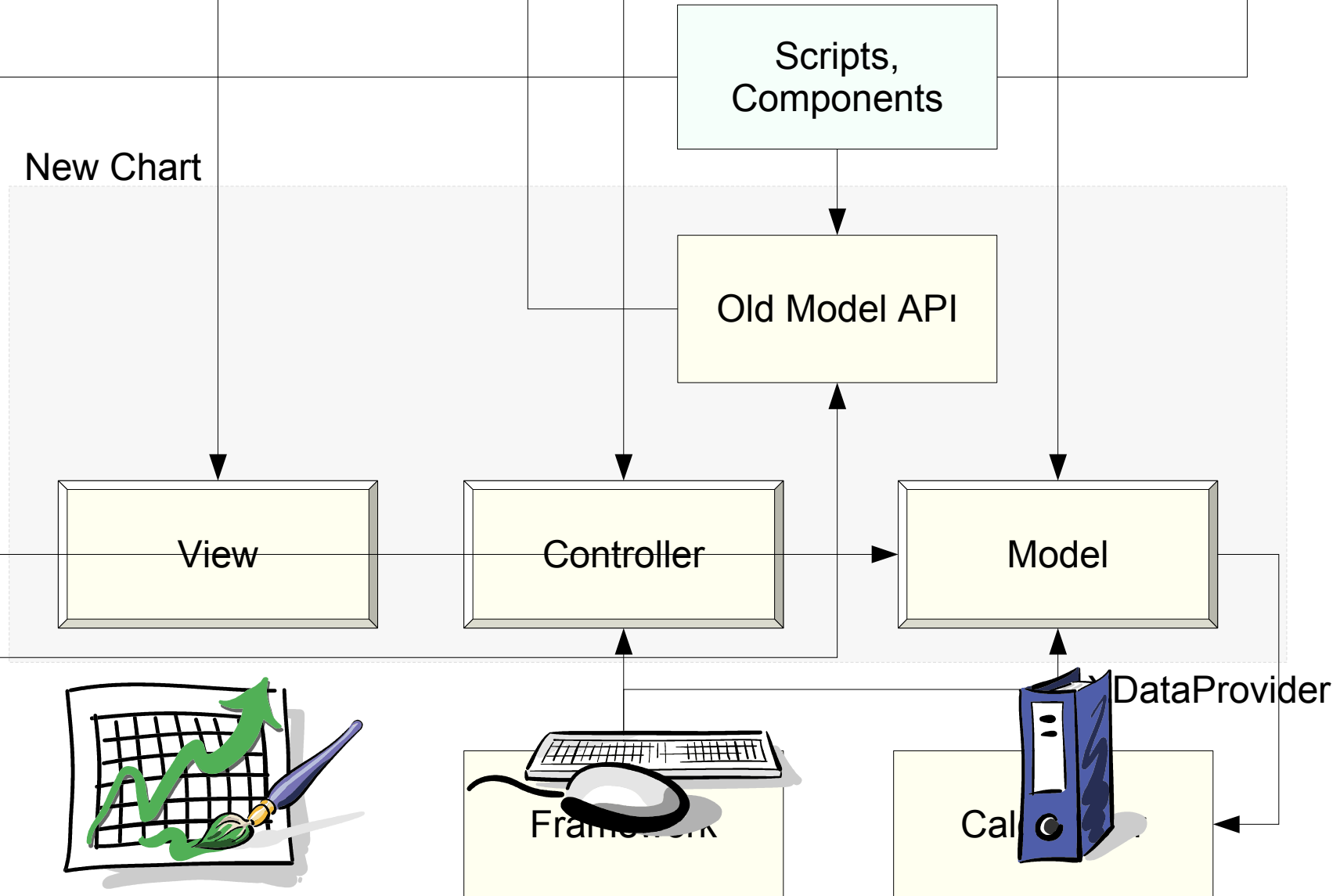


Opportunities for Developers

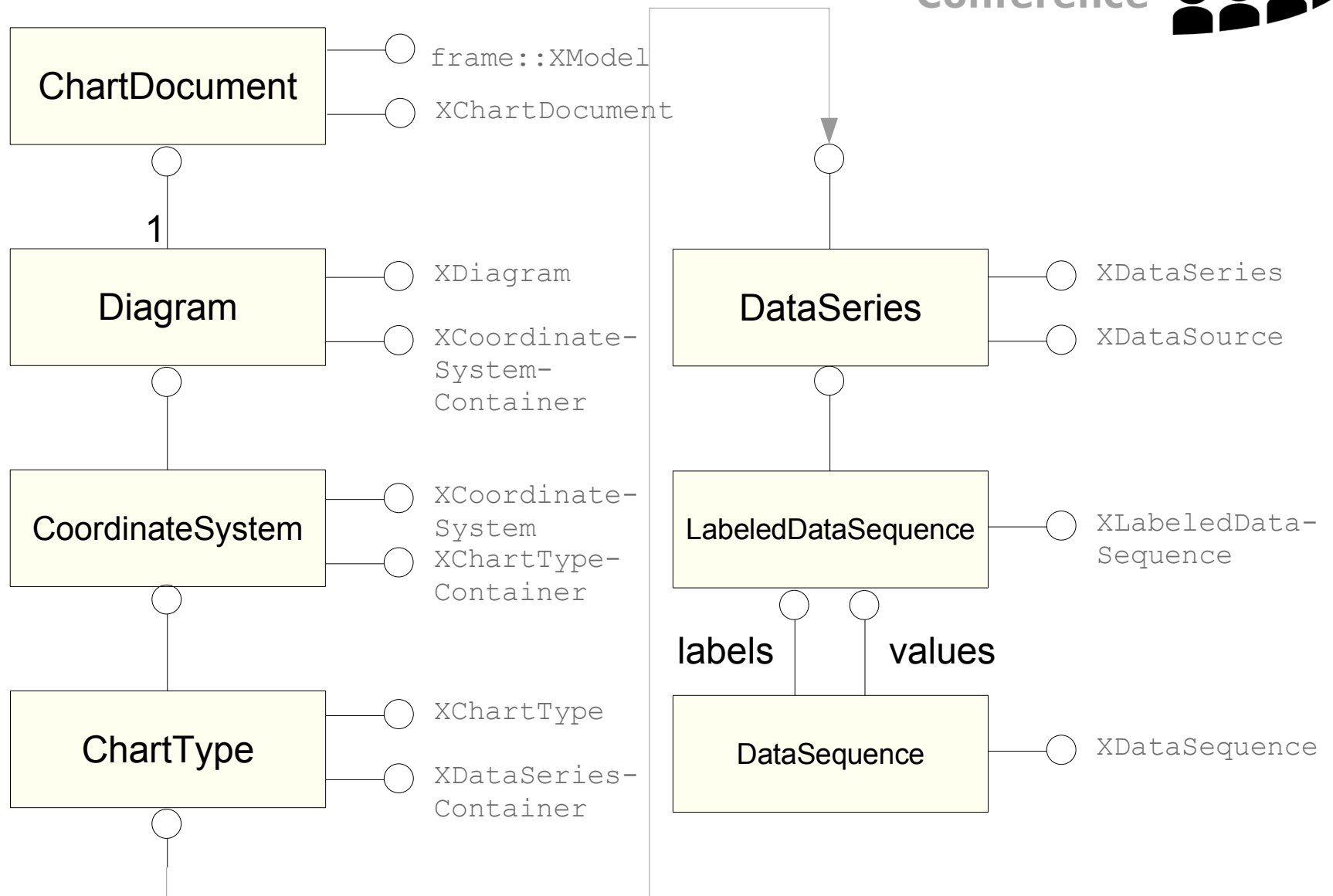


- Architecture Overview
- Compatibility with the old API
- How to use the New API
- Library Dependencies
- Areas where Help is needed

Architecture Overview



Model Structure



Example



```
'get the first data series
```

```
oChart = getChartModel() 'get the chart somehow
```

```
'old API
```

```
oSeriesProperties = _  
    oChart.Diagram.getDataRowProperties(0)
```

```
'new API
```

```
oSeries = oChart.firstDiagram.CoordinateSystems(0)._  
    ChartTypes(0).DataSeries(0)
```

Compatibility Old API



- The Old API is implemented (namespace `css::chart`)
- For Incompatibility or Migration Issues see the Wiki ([FAQ_about_Chart_API_Compatibility](#))
- Automated Testing will be re-established

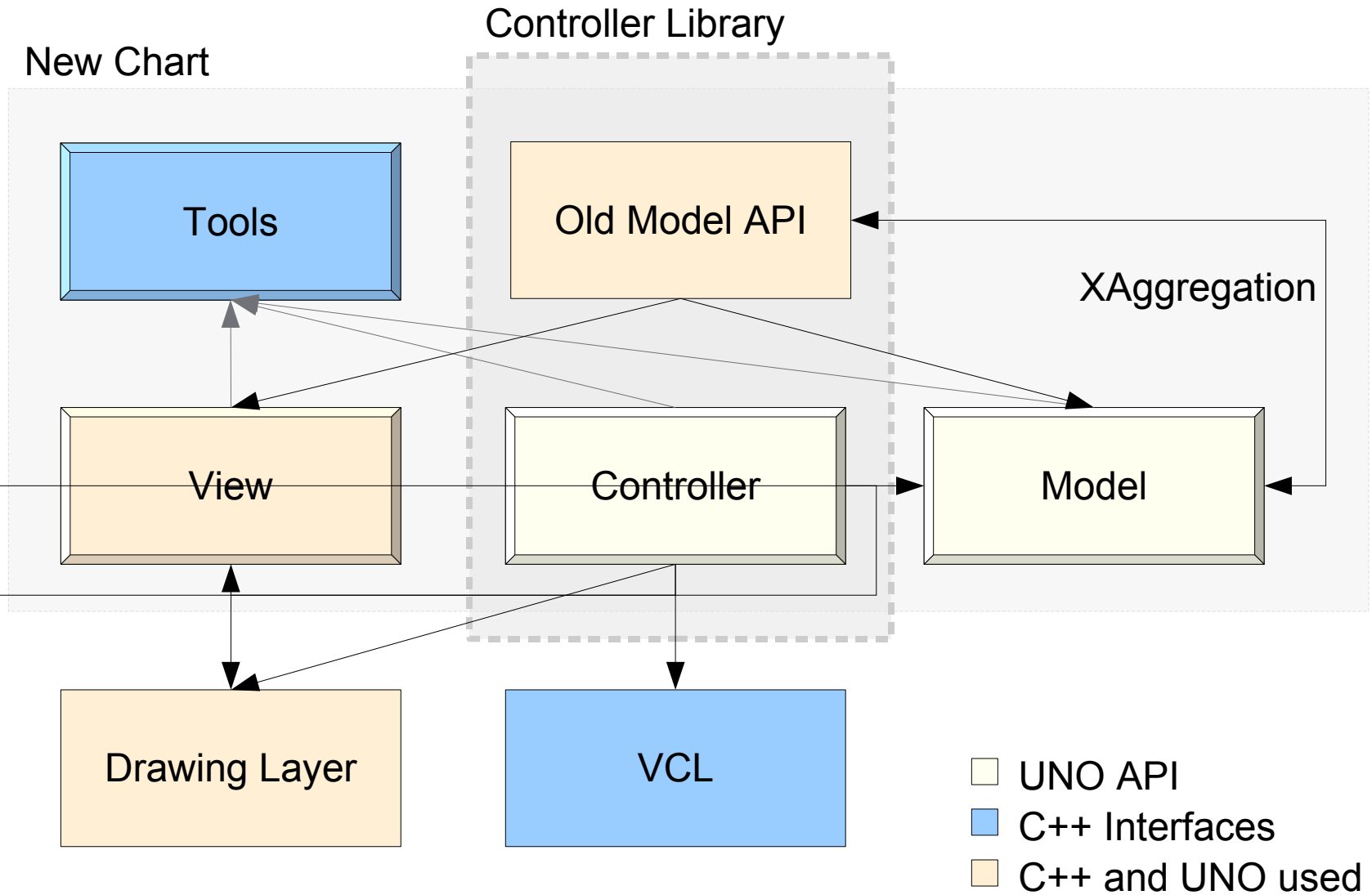
How to Use the New API



Live Demonstration



Library Dependencies



Where Help is Needed



- Testing
- Performance testing
- Writing Documentation, Demos
- Writing Specs
- Implementation makes more sense, once we integrated the current CWS

For Specs see:

<http://specs.openoffice.org/chart/index.html>

Open Issues Plans for the Future



- Finish re-implementation of old feature set
- Finalize and publish the new API
- Integrate new features
- Provide a convenience API for easier access of the new API

Idea for Implementing New Chart Types



- Write a new chart type component
- Write a data-series plotter view-component
- Create chart type templates that use the new chart type
- Provide some images as a preview for the wizard

Question and Answers



<http://graphics.openoffice.org/chart/chart.html>

